

# TOTE PICK DISTRIBUTION CENTER APPLICATION

## APPLICATION DETAILS

Tote stocking, tote picking, case picking, packing, and shipping conveyor sortation systems

RFID or bar code equipped totes allow tote direction at each zone and decision points

Sub 60 minute cycles from order release to package in the truck are typical

In-motion weighing and scanning for shipping sortation and carrier manifesting

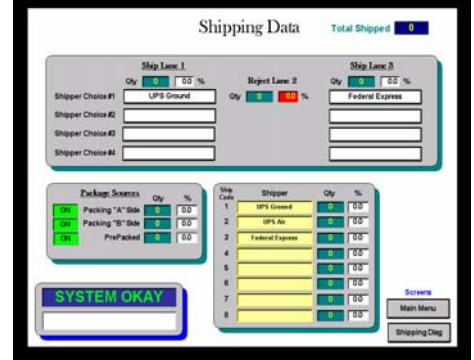
Multi-tote order consolidation at packing

Microsoft connectivity to corporate databases and WMS software

Tote tracking logs confirm pick zone attendance

Production statistics, custom SCADA and HMI engineering

Graphic system diagnostics, motion sensor and actuator graphics



## CONTROL SYSTEM FEATURES

Modular hardware design

Low voltage control

Fully connectorized, cord-based field wiring system

DeviceNet / CAN bus based intelligent I/O, motor controllers, and intelligent motion sensors / actuators

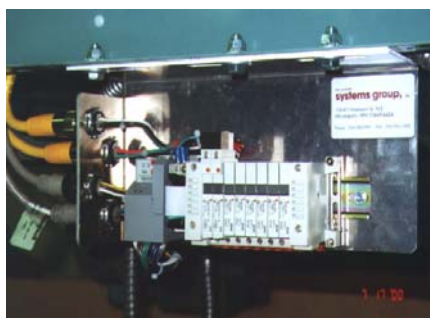
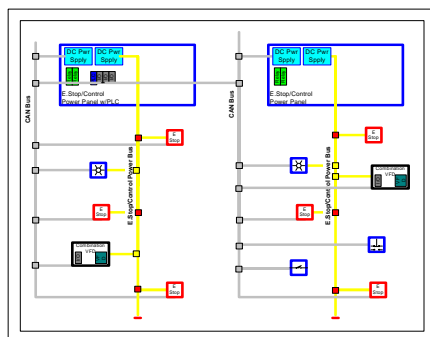
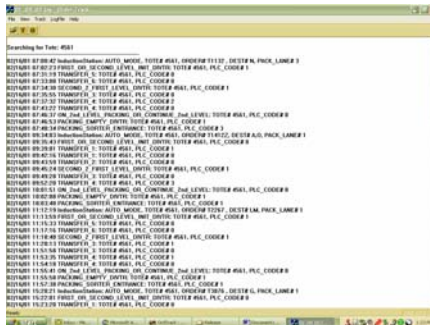
Extensive hardwired safety system using a modular bus topology

Reduces total engineering and installation costs by 30%

Layered control architecture with distributed processing

Ethernet connectivity to RFID / bar code readers, scales, and data entry stations

PLC control system or PC based control systems



## IMPLEMENTATION SERVICES

Customized conveyor system engineering, design, and turnkey project management

UL listed control panels and operator stations

On-site installation of control system elements and low voltage cabling

On-site commissioning, testing, and training

Comprehensive documentation package

4501 103<sup>rd</sup> Court NE  
Suite 120

Circle Pines, MN 55014  
Phone: 763-780-2993  
Fax: 763-780-2994

3007 Longhorn Blvd.  
Suite 113

Austin, TX 78758  
Phone: 512-837-5501  
Fax: 512-837-5838



PMB 417

1113 Murfreesboro Rd.  
Ste. 106

Franklin, TN 37064  
Phone: 512-837-5501  
Fax: 512-837-5838