

APPLICATION EXPERIENCE

Tote stocking, tote picking, case picking, packing, and shipping sortation systems

RFID or bar code equipped totes allow tote direction at each zone and decision point

Multi-tote order consolidation at packing

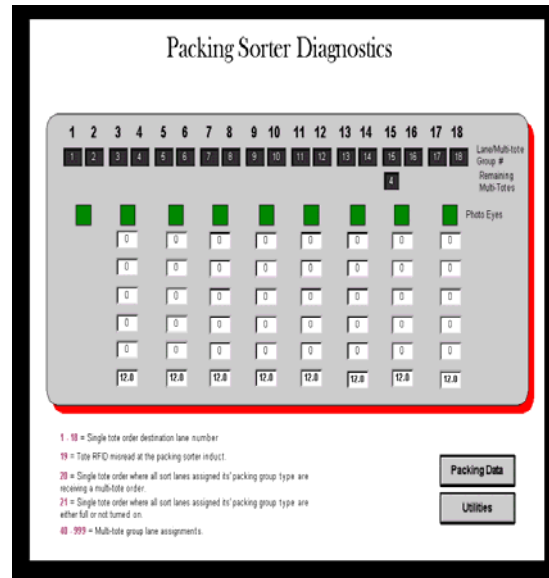
Tote tracking logs confirm pick zone attendance

CAN bus based intelligent I/O, motor controllers, and intelligent sensor/ actuators

Ethernet connectivity to RFID/ bar code readers, scales, and data entry stations

Microsoft connectivity to corporate databases and WMS software

Tote tracking logs confirm pick zone attendance



4501 103rd. Court NE
Suite 120
Circle Pines, MN. 55014
(763) 780-2993

11500 Metric Blvd
Suite 190
Austin, TX. 78758
(512) 837-5501

797 Grove Road
Suite 109
Richardson, TX 75081
(972) 664-0191

Application Experience

In-motion weighing and scanning for shipping sortation and carrier manifesting.

Multi Level Pick Modules, Carton and Pallet Flow Racks

Pick to Light, and Voice Activated Picking Systems

Fully connectorized, cord-based field wiring system

Modular hardware design

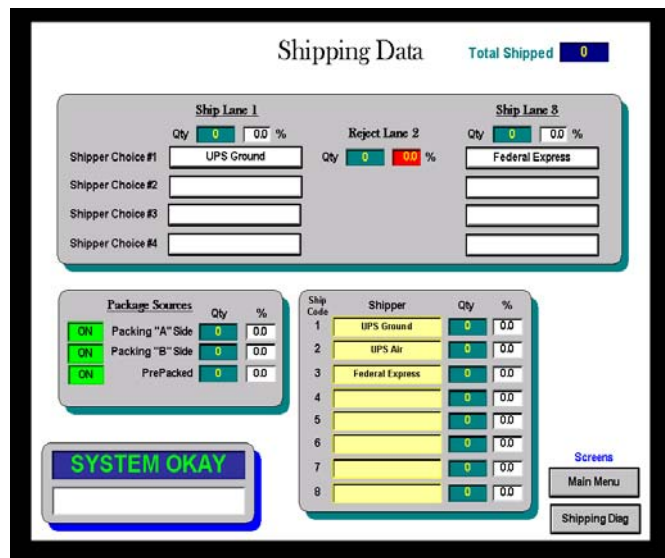
Layered control architecture with distributed processing

Low voltage control

Graphic system diagnostics

Personal computer based control

Production statistics



4501 103rd. Court NE
Suite 120
Circle Pines, MN. 55014
(763) 780-2993